

1.6/5.6



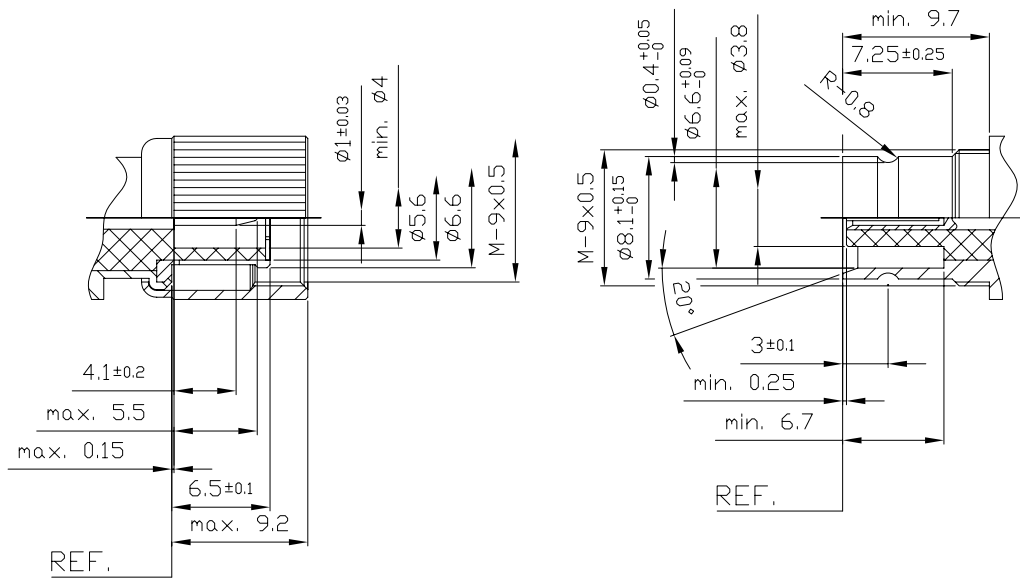
α ALFA'R CONNECTORS

LISTA DE CÓDIGOS

CODE LIST

CODE CÓDIGO	Pág.	CODE CÓDIGO	Pág.	CODE CÓDIGO	Pág.
A-1.6-02-75	16	A-1.6-11P38A-75	10	A-1.6-26P74-75-B	14
-07-75	16	-11P40-75	10	-28C25-75	12
-10C25-75	7	-11P45-75	10	-28C26B-75	12
-10C26B-75	7	-11P45A-75	10	-28C27-75	12
-10C27-75	7	-11P45B-75	10	-28C31-75	12
-10C31-75	7	-11P47-75	10	-28C34-75	12
-10C34-75	7	-11P48-75	10	-28C35-75	12
-10C35-75	7	-11P48A-75	10	-28C36-75	12
-10C36-75	7	-11P48B-75	10	-28C36A-75	12
-10C36A-75	7	-11P58-75	10	-28C37-75	12
-10C37-75	7	-11P59-75	10	-28C38-75	12
-10C38-75	7	-11P60-75	10	-28C40-75	12
-10C40-75	7	-11P60A-75	10	-28C45A-75	12
-10C44A-75	7	-11P60B-75	10	-28C47-75	12
-10C45A-75	7	-11P61-75	10	-28C48-75	12
-10C47-75	7	-11P65-75	10	-28C51-75	12
-10C51-75	7	-11P65A-75	10	-28C58-75	12
-10C56-75	7	-11P67A-75	10	-28C59-75	12
-10C58-75	7	-11P74-75	10	-28C60-75	12
-10C59-75	7	-11P74A-75	10	-28C60A-75	12
-10C60-75	7	-26C25-75	11	-28C61-75	12
-10C60A-75	7	-26C26B-75	11	-28C65-75	12
-10C65-75	7	-26C27-75	11	-28C65A-75	12
-10C67A-75	7	-26C31-75	11	-28C67A-75	12
-10C74A-75	7	-26C35-75	11	-28C74A-75	12
-10P25-75	9	-26C36-75	11	-28P25-75	15
-10P26B-75	9	-26C36A-75	11	-28P26B-75	15
-10P27-75	9	-26C37-75	11	-28P27-75	15
-10P27-75-A	9	-26C38-75	11	-28P27-75-A	15
-10P29-75	9	-26C40-75	11	-28P29-75	15
-10P31-75	9	-26C45A-75	11	-28P31-75	15
-10P31-75-A	9	-26C47-75	11	-28P31-75-A	15
-10P35-75	9	-26C51-75	11	-28P35-75	15
-10P36-75	9	-26C58-75	11	-28P36-75	15
-10P36A-75	9	-26C59-75	11	-28P36A-75	15
-10P37-75	9	-26C60-75	11	-28P37-75	15
-10P38-75	9	-26C60A-75	11	-28P38-75	15
-10P38A-75	9	-26C65-75	11	-28P38A-75	15
-10P40-75	9	-26C67A-75	11	-28P40-75	15
-10P45-75	9	-26C74A-75	11	-28P45-75	15
-10P45A-75	9	-26P25-75	13	-28P45A-75	15
-10P45B-75	9	-26P25-75-C	14	-28P45B-75	15
-10P47-75	9	-26P26B-75	13	-28P47-75	15
-10P48-75	9	-26P26B-75-C	14	-28P48-75	15
-10P48A-75	9	-26P27-75	13	-28P48A-75	15
-10P48B-75	9	-26P27-75-A	13	-28P48B-75	15
-10P58-75	9	-26P31-75	13	-28P51-75	15
-10P59-75	9	-26P31-75-A	13	-28P58-75	15
-10P60-75	9	-26P31-75-C	14	-28P59-75	15
-10P60A-75	9	-26P35-75	13	-28P60-75	15
-10P60B-75	9	-26P35-75-C	14	-28P60A-75	15
-10P61-75	9	-26P36-75	13	-28P60B-75	15
-10P65-75	9	-26P36-75-B	14	-28P61-75	15
-10P65A-75	9	-26P36A-75	13	-28P65-75	15
-10P67A-75	9	-26P36A-75-B	14	-28P65A-75	15
-10P74-75	9	-26P37-75	13	-28P67A-75	15
-10P74A-75	9	-26P37-75-B	14	-28P74-75	15
-11C25-75	8	-26P38-75	13	-28P74A-75	15
-11C26B-75	8	-26P38-75-B	14	-39-75-A	17
-11C27-75	8	-26P38A-75	13	-39-75-B	17
-11C31-75	8	-26P38A-75-B	14	-39-75-C	17
-11C34-75	8	-26P40-75	13	-39-75-D	17
-11C35-75	8	-26P45-75	13	-39-75-E	17
-11C36-75	8	-26P45-75-B	14	-39-75-F	17
-11C36A-75	8	-26P45A-75	13	-39-75-G	17
-11C38-75	8	-26P45A-75-B	14	-39-75-H	17
-11C40-75	8	-26P45B-75	13	-39-75-I	17
-11C45A-75	8	-26P45B-75-B	14	-39-75-J	17
-11C47-75	8	-26P47-75	13	-39-75-K	17
-11C48-75	8	-26P47-75-B	14	-39-75-L	17
-11C51-75	8	-26P48-75	13	-39-75-M	17
-11C58-75	8	-26P48-75-B	14	-39-75-N	17
-11C59-75	8	-26P48A-75	13	-39-75-O	17
-11C60-75	8	-26P48A-75-B	14	-39-75-P	17
-11C60A-75	8	-26P48B-75	13	-39-75-Q	17
-11C61-75	8	-26P48B-75-B	14	-39-75-R	17
-11C65-75	8	-26P58-75	13	-39-75-S	17
-11C65A-75	8	-26P59-75	13	-42-75-A	17
-11C67A-75	8	-26P59-75-B	14	-42-75-B	17
-11C74A-75	8	-26P60-75	13	-42-75-C	17
-11P25-75	10	-26P60-75-B	14	-42-75-D	17
-11P26B-75	10	-26P60A-75	13	-42-75-E	17
-11P27-75	10	-26P60A-75-B	14		
-11P27-75-A	10	-26P60B-75	13		
-11P29-75	10	-26P60B-75-B	14		
-11P31-75	10	-26P61-75	13		
-11P31-75-A	10	-26P61-75-B	14		
-11P35-75	10	-26P65-75	13		
-11P36-75	10	-26P65A-75	13		
-11P36A-75	10	-26P65A-75-B	14		
-11P37-75	10	-26P67A-75	13		
-11P38-75	10	-26P74-75	13		

Interconexión	<i>Interface</i>	5
Descripción	<i>Description</i>	5
Características	<i>Característica</i>		
- Eléctricas	<i>Electrical</i>	6
- Mecánicas	<i>Mechanical</i>	6
- Ambientales	<i>Environmental</i>	6
Conectores para cable flexible	<i>Connectors for flexible cable</i>		
- macho crimp	<i>crimp type plug</i>		
- recto	<i>straight</i>	7
- 90°	<i>90°</i>	8
- hembra panel crimp (montaje trasero)	<i>crimp bulkhead jack (rear mounting)</i>		
- recta	<i>straight</i>	11
- 90°	<i>90°</i>	12
- macho prensaestopas	<i>clamp type plug</i>		
- recto	<i>straight</i>	9
- 90°	<i>90°</i>	10
- hembra panel prensa estopas (montaje trasero)	<i>clamp bulkhead jack (rear mounting)</i>		
- recto	<i>straight</i>	13,14
- 90°	<i>90°</i>	15
Adaptadores	<i>Adaptors</i>		
- prolongación	<i>prolongation</i>		
- macho-hembra	<i>plug-jack</i>	16
- pasamuros hembra-hembra	<i>jack-jack panel adapter</i>	16
- macho-macho en U	<i>U plug-plug</i>		
- macho-macho	<i>plug-plug</i>	17
- adaptador en Y	<i>Y adaptor</i>		
- macho-hembra-macho	<i>plug-jack-plug</i>	17



La serie 1.6/5.6 está formada por conectores coaxiales de precisión, los cuales tienen alta resistencia mecánica, estabilidad eléctrica y alta fiabilidad. Su pequeño tamaño permite disponer de poco espacio.

Están especialmente diseñados para el desarrollo de comunicaciones ingenieriles y para altas velocidades de transmisión, por ejemplo, en instrumentos de PCM. Su frecuencia característica alcanza los 8GHz.

Disponemos de la versión roscada.

En cuanto al montaje del cable, disponemos de versiones prensa estopa y crimp. Las versiones de forma son: recto o acodado. Su uso requiere cable flexible, cuyo diámetro puede variar de 2.5 a 7.4mm.

normativa: IEC 169-13

1.6/5.6 series are formed by precision coaxial connectors which have a high mechanical resistance, electrical stability, high reliable applications and low space requirements.

They are especially developed for engineering communications and high bit-rates transmission, e.g. in PCM devices. The frequency range ups to 8GHz.

Screw-on version is available, it is due to fit connector in a coupling nut plug and socket sections are threaded by hand.

Clamp or crimp type are available. They can be straight, or 90° angle, useful for flexible cable of which diameter is from 2.5 to 7.4 mm.

standard: IEC 169-13

características eléctricas / *electrical characteristics*

impedancia característica / <i>characteristic impedance</i>	75 Ω
margen de frecuencia utilizable (recomendado) <i>useful frequency range (recommended)</i>	0...4 GHz
VSWR (straight contacts)	≤ 1.23 typ.
RF-leakage	≥ 90 dB
resistencia del aislante / <i>insulator resistance</i>	> 10 ⁴ MΩ
resistencia del contacto interior / <i>inner contact resistance</i>	≤ 10.0 mΩ
resistencia del contacto exterior / <i>outer contact resistance</i>	≤ 7.5 mΩ
voltaje de trabajo / <i>working voltage</i>	330 V rms
voltaje de rotura / <i>dielectric withstanding voltage</i>	1000 Vrms

características mecánicas / *mechanical characteristics*

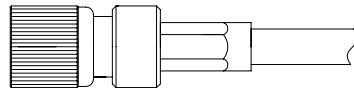
material aislante / <i>insulator material</i>	PTFE / <i>PTFE</i>
material cuerpos y contactos exteriores / <i>outer bodies and contacts material</i>	cuerpos exteriores / <i>outer bodies: Brass</i> contactos exteriores / <i>outer contact: CuBe</i>
juntas estanqueidad / <i>gaskets</i>	<i>Rubber</i>
acabados / <i>finish plating</i>	contactos exteriores / <i>outer contact:</i> 3μ Ni + 1μ Au contactos interiores / <i>inner contacts:</i> 3μ Ni + 1μ Au

características ambientales / *environmental characteristics*

margen de temperatura / <i>temperature range</i>	-65°C...+155°C
categoría climática IEC / <i>IEC climatic category</i>	55/155/21
choque térmico / <i>thermal shock</i>	MIL-STD-202/107-B
resistencia a la corrosión / <i>corrosion resistance</i>	MIL-STD-202/101-B
resistencia a la vibración / <i>vibration resistance</i>	MIL-STD-202/204-B

Conectores para cable flexible
macho recto crimp

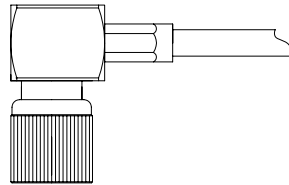
Connectors for flexible cables
straight crimp type plug



<i>CABLE</i> CABLE	<i>ALFA'R CODE</i> CÓDIGO ALFA'R	
RG-179	A-1.6-10C25-75	
RG-187; TZC-75101	A-1.6-10C26B-75	
FLEX-2	A-1.6-10C27-75	
ST-212	A-1.6-10C31-75	
2Y(St)CY 0.45/2	A-1.6-10C34-75	
FLEX-3	A-1.6-10C35-75	
BT-3002	A-1.6-10C36-75	
TZC-75024	A-1.6-10C36A-75	
EV1CH 0.315/1.95	A-1.6-10C37-75	
2YCY 0.4/2.5	A-1.6-10C38-75	
2.5C-2V	A-1.6-10C40-75	
S 0.4/2.5	A-1.6-10C44A-75	
2YCCY 0.4/2.5	A-1.6-10C45A-75	
FLEX-5	A-1.6-10C47-75	
BT-2002	A-1.6-10C51-75	
TZC-75005	A-1.6-10C56-75	
3C-2V	A-1.6-10C58-75	
ST-214	A-1.6-10C59-75	
FLEX-6	A-1.6-10C60-75	
2YCY 0.7/4.4	A-1.6-10C60A-75	
3C-2W	A-1.6-10C65-75	
BT-2003	A-1.6-10C67A-75	
2YCCY 0.7/4.4	A-1.6-10C74A-75	

macho 90° crimp

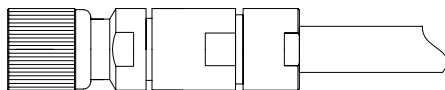
90° crimp type plug



<i>CABLE</i> CABLE	<i>ALFA'R CODE</i> CÓDIGO ALFA'R	
RG-179	A-1.6-11C25-75	
RG-187; TZC-75101	A-1.6-11C26B-75	
FLEX-2	A-1.6-11C27-75	
ST-212	A-1.6-11C31-75	
2Y(St)CY 0.45/2	A-1.6-11C34-75	
FLEX-3	A-1.6-11C35-75	
BT-3002	A-1.6-11C36-75	
TZC-75024	A-1.6-11C36A-75	
2YCY 0.4/2.5	A-1.6-11C38-75	
2.5C-2V	A-1.6-11C40-75	
2YCCY 0.4/2.5	A-1.6-11C45A-75	
FLEX-5	A-1.6-11C47-75	
ST-121	A-1.6-11C48-75	
BT-2002	A-1.6-11C51-75	
3C-2V	A-1.6-11C58-75	
ST-214	A-1.6-11C59-75	
FLEX-6	A-1.6-11C60-75	
2YCY 0.7/4.4	A-1.6-11C60A-75	
RG-59	A-1.6-11C61-75	
3C-2W	A-1.6-11C65-75	
ST-271	A-1.6-11C65A-75	
BT-2003	A-1.6-11C67A-75	
2YCCY 0.7/4.4	A-1.6-11C74A-75	

macho recto prensaestopas

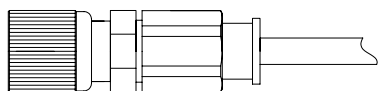
straight clamp type plug



<i>CABLE</i> CABLE	<i>ALFA`R CODE</i> CÓDIGO ALFA`R
FLEX-2	A-1.6-10P27-75
ST-212	A-1.6-10P31-75
FLEX-3	A-1.6-10P35-75
BT-3002	A-1.6-10P36-75
TZC-75024	A-1.6-10P36A-75
EV1CH 0.315/1.95	A-1.6-10P37-75
2YCY 0.4/2.5	A-1.6-10P38-75
AMPHENOL 21-597	A-1.6-10P38A-75
2.5C-2V	A-1.6-10P40-75
FLEX-4	A-1.6-10P45-75
2YCCY 0.4/2.5	A-1.6-10P45A-75
2YD(sT)Y 0.5/3.0	A-1.6-10P45B-75
FLEX-5	A-1.6-10P47-75
ST-121	A-1.6-10P48-75
ST-120	A-1.6-10P48A-75
2YC(mS)CY 0.4/2.5	A-1.6-10P48B-75
3C-2V	A-1.6-10P58-75
ST-214	A-1.6-10P59-75
FLEX-6	A-1.6-10P60-75
2YCY 0.7/4.4	A-1.6-10P60A-75
2YC(mS)CY 0.5/3.0	A-1.6-10P60B-75
RG-59	A-1.6-10P61-75
3C-2W	A-1.6-10P65-75
ST-271	A-1.6-10P65A-75
BT-2003	A-1.6-10P67A-75
FLEX-7	A-1.6-10P74-75
2YCCY 0.7/4.4	A-1.6-10P74A-75

macho recto prensaestopas

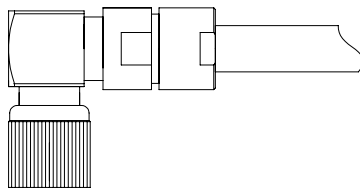
straight clamp type plug



<i>CABLE</i> CABLE	<i>ALFA`R CODE</i> CÓDIGO ALFA`R
RG-179	A-1.6-10P25-75
RG-187; TZC-75101	A-1.6-10P26B-75
FLEX-2	A-1.6-10P27-75-A
1.5C-2V	A-1.6-10P29-75
ST-212	A-1.6-10P31-75-A

macho 90° prensaestopas

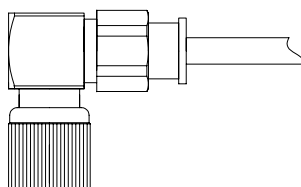
90° clamp type plug



<i>CABLE</i> CABLE	<i>ALFA`R CODE</i> CÓDIGO ALFA`R
FLEX-2	A-1.6-11P27-75
ST-212	A-1.6-11P31-75
FLEX-3	A-1.6-11P35-75
BT-3002	A-1.6-11P36-75
TZC-75024	A-1.6-11P36A-75
EV1CH 0.315/1.95	A-1.6-11P37-75
2YCY 0.4/2.5	A-1.6-11P38-75
AMPHENOL 21-597	A-1.6-11P38A-75
2.5C-2V	A-1.6-11P40-75
FLEX-4	A-1.6-11P45-75
2YCCY 0.4/2.5	A-1.6-11P45A-75
2YD(sT)Y 0.5/3.0	A-1.6-11P45B-75
FLEX-5	A-1.6-11P47-75
ST-121	A-1.6-11P48-75
ST-120	A-1.6-11P48A-75
2YC(mS)CY 0.4/2.5	A-1.6-11P48B-75
3C-2V	A-1.6-11P58-75
ST-214	A-1.6-11P59-75
FLEX-6	A-1.6-11P60-75
2YCY 0.7/4.4	A-1.6-11P60A-75
2YC(mS)CY 0.5/3.0	A-1.6-11P60B-75
RG-59	A-1.6-11P61-75
3C-2W	A-1.6-11P65-75
ST-271	A-1.6-11P65A-75
BT-2003	A-1.6-11P67A-75
FLEX-7	A-1.6-11P74-75
2YCCY 0.7/4.4	A-1.6-11P74A-75

macho 90° prensaestopas

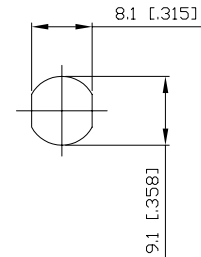
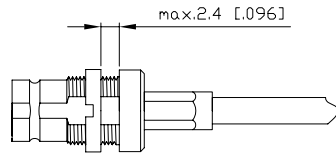
90° clamp type plug



<i>CABLE</i> CABLE	<i>ALFA`R CODE</i> CÓDIGO ALFA`R
RG-179	A-1.6-11P25-75
RG-187; TZC-75101	A-1.6-11P26B-75
FLEX-2	A-1.6-11P27-75-A
1.5C-2V	A-1.6-11P29-75
ST-212	A-1.6-11P31-75-A

hembra recta crimp

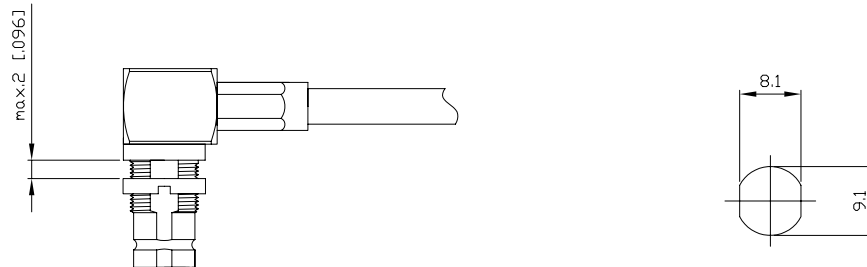
straight crimp type jack



<i>CABLE</i> CABLE	<i>ALFA`R CODE</i> CÓDIGO ALFA`R	
RG-179	A-1.6-26C25-75	
RG-187; T2C-75101	A-1.6-26C26B-75	
FLEX-2	A-1.6-26C27-75	
ST-212	A-1.6-26C31-75	
FLEX-3	A-1.6-26C35-75	
BT-3002	A-1.6-26C36-75	
T2C-75024	A-1.6-26C36A-75	
EV1CH 0.315/1.95	A-1.6-26C37-75	
2YCY 0.4/2.5	A-1.6-26C38-75	
2.5C-2V	A-1.6-26C40-75	
2YCCY 0.4/2.5	A-1.6-26C45A-75	
FLEX-5	A-1.6-26C47-75	
BT-2002	A-1.6-26C51-75	
3C-2V	A-1.6-26C58-75	
ST-214	A-1.6-26C59-75	
FLEX-6	A-1.6-26C60-75	
2YCY 0.7/4.4	A-1.6-26C60A-75	
3C-2W	A-1.6-26C65-75	
BT-2003	A-1.6-26C67A-75	
2YCCY 0.7/4.4	A-1.6-26C74A-75	

hembra 90° crimp

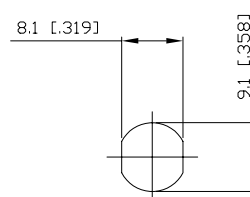
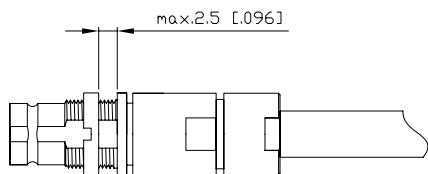
90° crimp type jack



<i>CABLE</i> CABLE	<i>ALFA'R CODE</i> CÓDIGO ALFA'R
RG-179	A-1.6-28C25-75
RG-187; TZC-75101	A-1.6-28C26B-75
FLEX-2	A-1.6-28C27-75
ST-212	A-1.6-28C31-75
2Y(St)CY 0.45/2	A-1.6-28C34-75
FLEX-3	A-1.6-28C35-75
BT-3002	A-1.6-28C36-75
TZC-75024	A-1.6-28C36A-75
EV1CH 0.315/1.95	A-1.6-28C37-75
2YCY 0.4/2.5	A-1.6-28C38-75
2.5C-2V	A-1.6-28C40-75
2YCCY 0.4/2.5	A-1.6-28C45A-75
FLEX-5	A-1.6-28C47-75
ST-121	A-1.6-28C48-75
BT-2002	A-1.6-28C51-75
3C-2V	A-1.6-28C58-75
ST-214	A-1.6-28C59-75
FLEX-6	A-1.6-28C60-75
2YCY 0.7/4.4	A-1.6-28C60A-75
RG-59	A-1.6-28C61-75
3C-2W	A-1.6-28C65-75
ST-271	A-1.6-28C65A-75
BT-2003	A-1.6-28C67A-75
2YCCY 0.7/4.4	A-1.6-28C74A-75

hembra recta prensaestopas

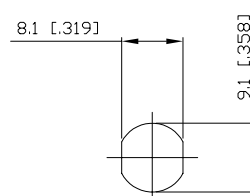
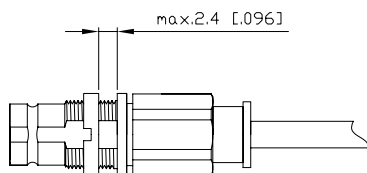
straight clamp type jack



CABLE	ALFA`R CODE	
CABLE	CÓDIGO ALFA`R	
FLEX-2	A-1.6-26P27-75	
ST-212	A-1.6-26P31-75	
FLEX-3	A-1.6-26P35-75	
BT-3002	A-1.6-26P36-75	
TZC-75024	A-1.6-26P36A-75	
EV1CH 0.315/1.95	A-1.6-26P37-75	
2YCY 0.4/2.5	A-1.6-26P38-75	
AMPHENOL 21-597	A-1.6-26P38A-75	
2.5C-2V	A-1.6-26P40-75	
FLEX-4	A-1.6-26P45-75	
2YCCY 0.4/2.5	A-1.6-26P45A-75	
2YD(sT)Y 0.5/3.0	A-1.6-26P45B-75	
FLEX-5	A-1.6-26P47-75	
ST-121	A-1.6-26P48-75	
ST-120	A-1.6-26P48A-75	
2YC(mS)CY 0.4/2.5	A-1.6-26P48B-75	
3C-2V	A-1.6-26P58-75	
ST-214	A-1.6-26P59-75	
FLEX-6	A-1.6-26P60-75	
2YCY 0.7/4.4	A-1.6-26P60A-75	
2YC(mS)CY 0.5/3.0	A-1.6-26P60B-75	
RG-59	A-1.6-26P61-75	
3C-2W	A-1.6-26P65-75	
ST-271	A-1.6-26P65A-75	
BT-2003	A-1.6-26P67A-75	
FLEX-7	A-1.6-26P74-75	

hembra recta prensaestopas

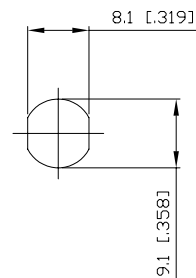
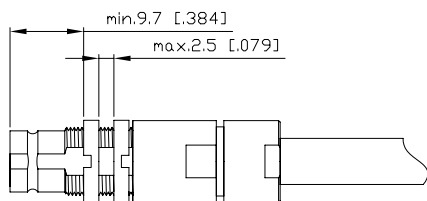
straight clamp type jack



CABLE	ALFA`R CODE	
CABLE	CÓDIGO ALFA`R	
RG-179	A-1.6-26P25-75	
RG-187; TZC-75101	A-1.6-26P26B-75	
FLEX-2	A-1.6-26P27-75-A	
ST-212	A-1.6-26P31-75-A	

hembra recta prensaestopas

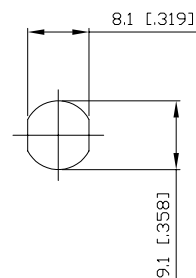
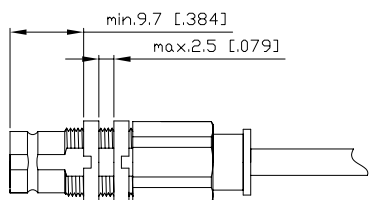
straight clamp type jack



CABLE	ALFA`R CODE	
CABLE	CÓDIGO ALFA`R	
BT-3002	A-1.6-26P36-75-B	
TZC-75024	A-1.6-26P36A-75-B	
EV1CH 0.315/1.95	A-1.6-26P37-75-B	
2YCY 0.4/2.5	A-1.6-26P38-75-B	
AMPHENOL 21-597	A-1.6-26P38A-75-B	
FLEX-4	A-1.6-26P45-75-B	
2YCCY 0.4/2.5	A-1.6-26P45A-75-B	
2YD(sT)Y 0.5/3.0	A-1.6-26P45B-75-B	
FLEX-5	A-1.6-26P47-75-B	
ST-121	A-1.6-26P48-75-B	
ST-120	A-1.6-26P48A-75-B	
2YC(mS)CY 0.4/2.5	A-1.6-26P48B-75-B	
ST-214	A-1.6-26P59-75-B	
FLEX-6	A-1.6-26P60-75-B	
2YCY 0.7/4.4	A-1.6-26P60A-75-B	
2YC(mS)CY 0.5/3.0	A-1.6-26P60B-75-B	
RG-59	A-1.6-26P61-75-B	
ST-271	A-1.6-26P65A-75-B	
FLEX-7	A-1.6-26P74-75-B	

hembra recta prensaestopas

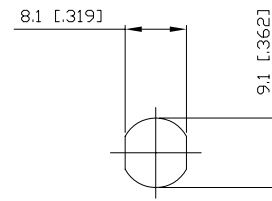
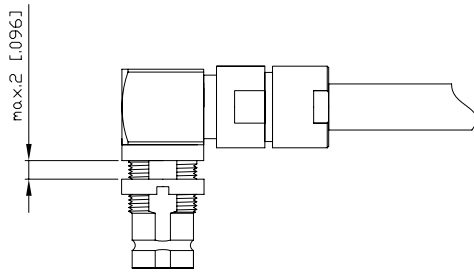
straight clamp type jack



CABLE	ALFA`R CODE	
CABLE	CÓDIGO ALFA`R	
RG-179	A-1.6-26P25-75-C	
RG-187; TZC-75101	A-1.6-26P26B-75-C	
ST-212	A-1.6-26P31-75-C	
FLEX-3	A-1.6-26P35-75-C	

hembra 90° prensaestopas

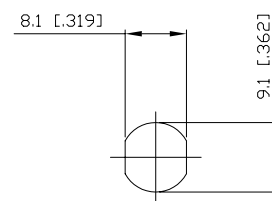
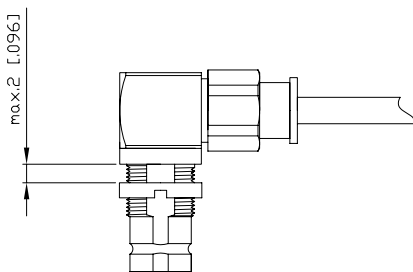
90° clamp type jack



CABLE	ALFA`R CODE CÓDIGO ALFA`R
FLEX-2	A-1.6-28P27-75
ST-212	A-1.6-28P31-75
FLEX-3	A-1.6-28P35-75
BT-3002	A-1.6-28P36-75
TZC-75024	A-1.6-28P36A-75
EV1CH 0.315/1.95	A-1.6-28P37-75
2YCY 0.4/2.5	A-1.6-28P38-75
AMPHENOL 21-597	A-1.6-28P38A-75
2.5C-2V	A-1.6-28P40-75
FLEX-4	A-1.6-28P45-75
2YCCY 0.4/2.5	A-1.6-28P45A-75
2YD(sT)Y 0.5/3.0	A-1.6-28P45B-75
FLEX-5	A-1.6-28P47-75
ST-121	A-1.6-28P48-75
ST-120	A-1.6-28P48A-75
2YC(mS)CY 0.4/2.5	A-1.6-28P48B-75
BT-2002	A-1.6-28P51-75
3C-2V	A-1.6-28P58-75
ST-214	A-1.6-28P59-75
FLEX-6	A-1.6-28P60-75
2YCY 0.7/4.4	A-1.6-28P60A-75
2YC(mS)CY 0.5/3.0	A-1.6-28P60B-75
RG-59	A-1.6-28P61-75
3C-2W	A-1.6-28P65-75
ST-271	A-1.6-28P65A-75
BT-2003	A-1.6-28P67A-75
FLEX-7	A-1.6-28P74-75
2YCCY 0.7/4.4	A-1.6-28P74A-75

macho 90° prensaestopas

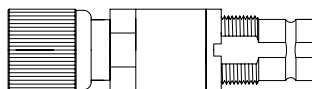
90° clamp type jack



CABLE	ALFA`R CODE CÓDIGO ALFA`R
RG-179	A-1.6-28P25-75
RG-187; TZC-75101	A-1.6-28P26B-75
FLEX-2	A-1.6-28P27-75-A
1.5C-2V	A-1.6-28P29-75
ST-212	A-1.6-28P31-75-A

Adaptadores
prolongación

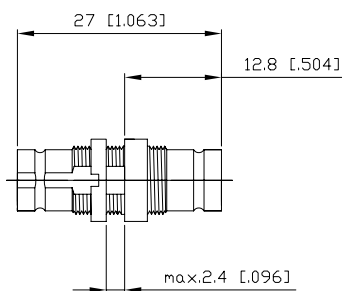
Adaptors
prolongation



<i>NOTE</i>		<i>ALFA`R CODE</i>	
NOTA		CÓDIGO ALFA`R	
<i>plug-jack</i>	macho-hembra	A-1.6-07-75	

pasa muros hembra-hembra

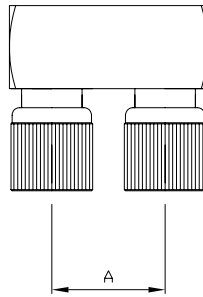
bulkhead jack-jack



<i>NOTE</i>		<i>ALFA`R CODE</i>	
NOTA		CÓDIGO ALFA`R	
<i>jack-jack</i>	hembra-hembra	A-1.6-02-75	

adaptador en U

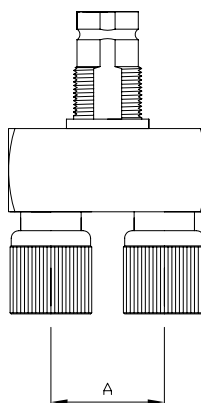
U adapter



NOTE NOTA	ALFA`R CODE CÓDIGO ALFA`R	A	
<i>plug-plug</i> <i>macho-macho</i>	A-1.6-39-75-A	15 [.591]	
	A-1.6-39-75-B	20 [.787]	
	A-1.6-39-75-C	21 [.827]	
	A-1.6-39-75-D	23 [.906]	
	A-1.6-39-75-E	25 [.984]	
	A-1.6-39-75-F	30 [1.181]	
	A-1.6-39-75-G	35 [1.378]	
	A-1.6-39-75-H	40 [1.575]	
	A-1.6-39-75-I	41.5 [1.634]	
	A-1.6-39-75-J	45 [1.772]	
	A-1.6-39-75-K	45.5 [1.791]	
	A-1.6-39-75-L	46.4 [1.827]	
	A-1.6-39-75-M	50 [1.969]	
	A-1.6-39-75-N	55 [2.165]	
	A-1.6-39-75-O	60 [2.362]	
	A-1.6-39-75-P	65 [2.559]	
A-1.6-39-75-Q	70 [2.776]		
A-1.6-39-75-R	71 [2.795]		
A-1.6-39-75-S	75 [2.953]		

adaptador en Y
(punto de prueba)

Y adapter
(test point)



NOTE NOTA	ALFA`R CODE CÓDIGO ALFA`R	A	
<i>plug-jack-plug</i> <i>macho-hembra-macho</i>	A-1.6-42-75-A	15 [.591]	
	A-1.6-42-75-B	30 [1.181]	
	A-1.6-42-75-C	45 [1.772]	
	A-1.6-42-75-D	60 [2.362]	
	A-1.6-42-75-E	75 [2.953]	